

# Freight Transportation Company Case Study

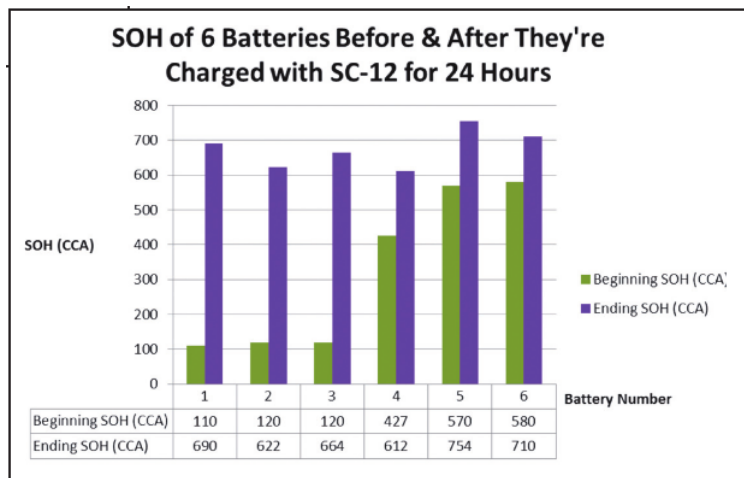
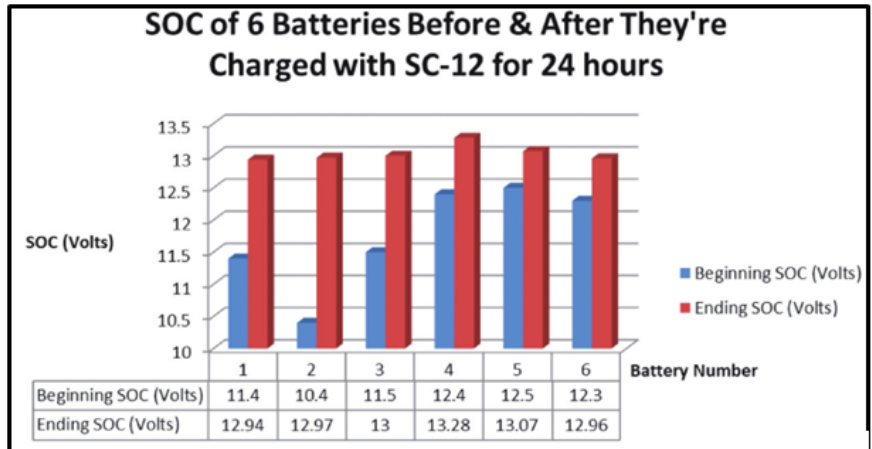
A well-known Freight Transportation Company sees significant battery improvement after using the SC-12, Xtreme 12-Station HD Battery Charger.

## Challenge:

A well-known Freight Transportation Company saw the effectiveness of their 12-Volt batteries deteriorate over time and even suspected that new batteries weren't performing as they should.

## Results:

PulseTech performed battery recovery work on six batteries (type GR 31 650CCA) to show the effectiveness of the SC-12, 12-Station Battery Charger. Three batteries, originally marked as 'bad', (battery numbers 1-3) and three new batteries (battery numbers 4-6) were all attached to a SC-12 and charged for 24 hours. The 390PT Battery Tester was used to accurately record SOC and SOH values before and after charging.



Prior to the test, batteries 1-3 were assumed bad. However, within 24 hours the SC-12 was able to recover them and bring them back to a 'like new' condition saving the expense of new batteries and manpower hours needed to replace them.

Even the new batteries 4-6 saw significant improvement when charged with the SC-12.

New batteries frequently spend months in transit and in warehouses before you install them and are often discharged up to 50%. Don't assume new batteries are at peak condition as you can set yourself up to fail despite your best efforts. It is always important to test and maintain batteries prior to use.